

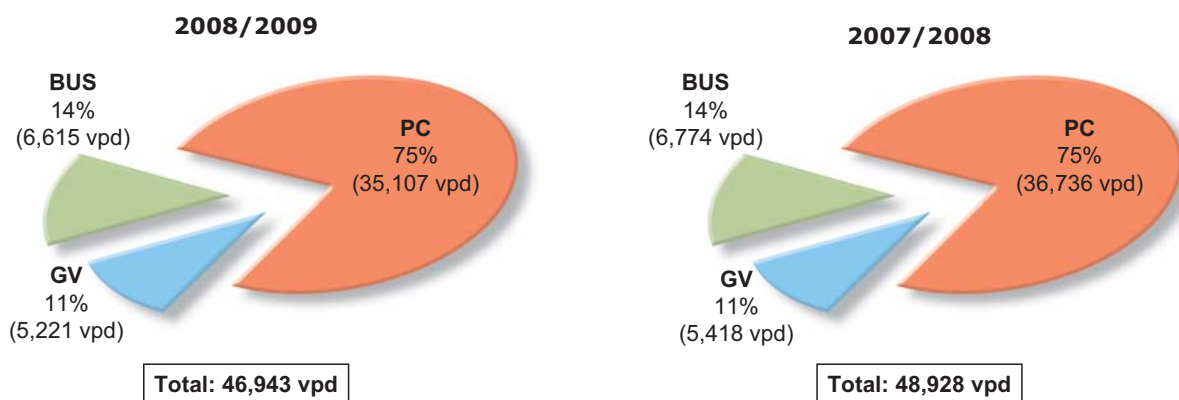
# Market Review

## Market Summary

### Traffic Throughput, Toll Revenue and Market Share

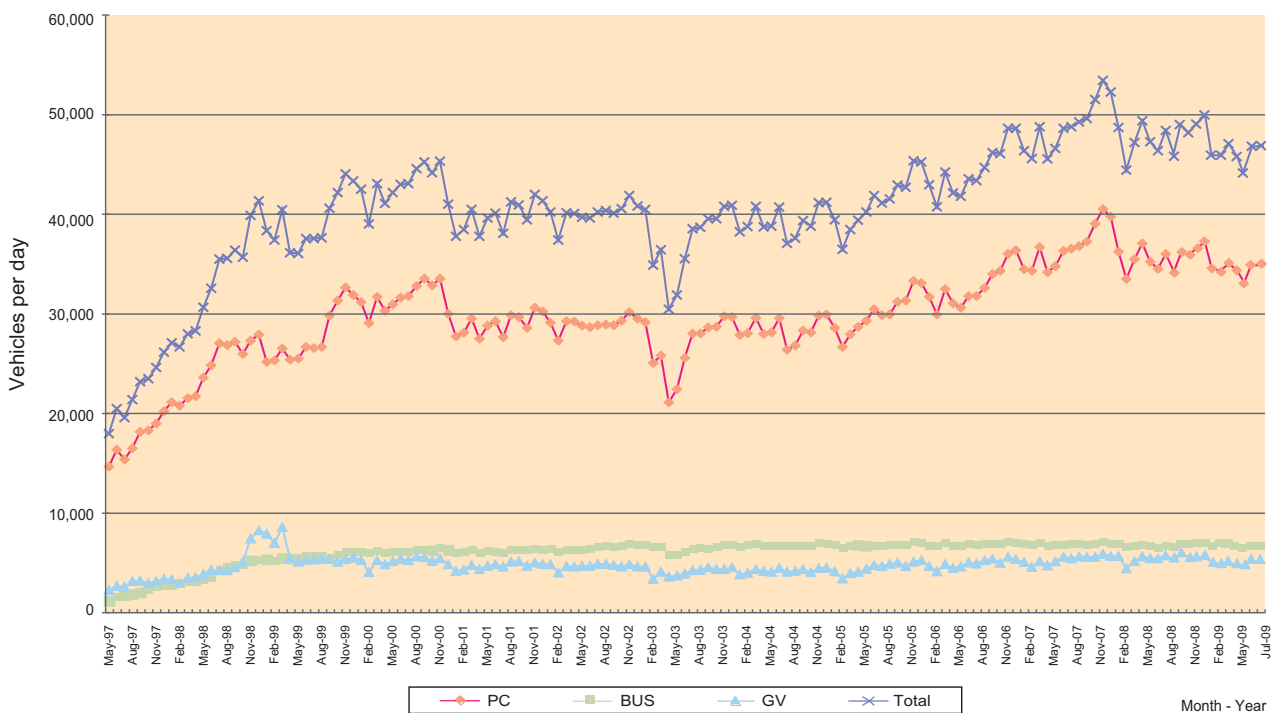
A total of 17,134,037 vehicular journeys were recorded during the year ended 31 July 2009. In terms of vehicle per day, a 4% decrease as compared to the previous year was observed. Besides, there was a 1% point decrease in market share, from 21% in 2007/2008 to 20% in 2008/2009. The decrease in the traffic throughput and the market share were mainly caused by the downturn of economy and decrease in total market.

### Traffic Mix by Vehicle Category



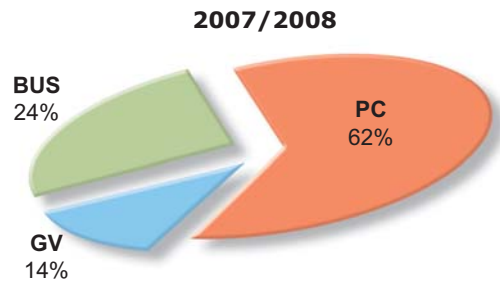
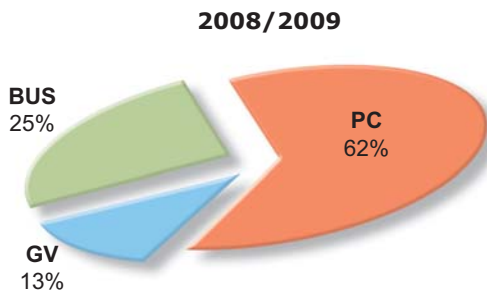
BUS - Double-decked Buses, Single-decked Buses and Light Buses  
 GV - Goods Vehicles  
 PC - Private Cars, Taxis, Motorcycles  
 vpd - Vehicles Per Day

### Monthly Traffic Mix since the Tunnel's Opening on 30 April 1997



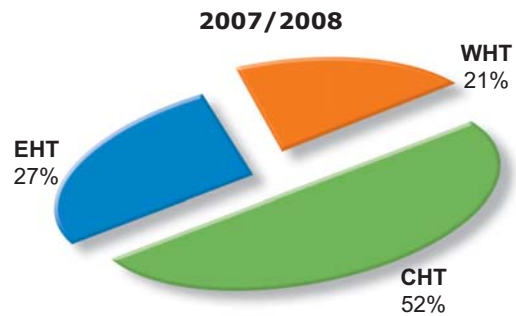
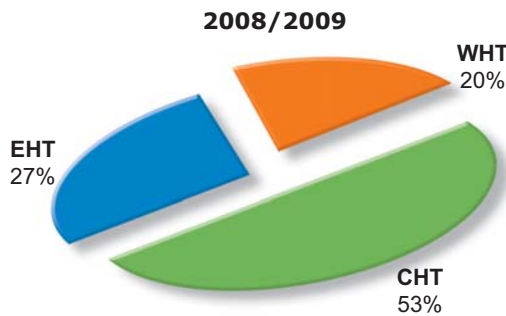
# Market Review

## Toll Revenue Distribution



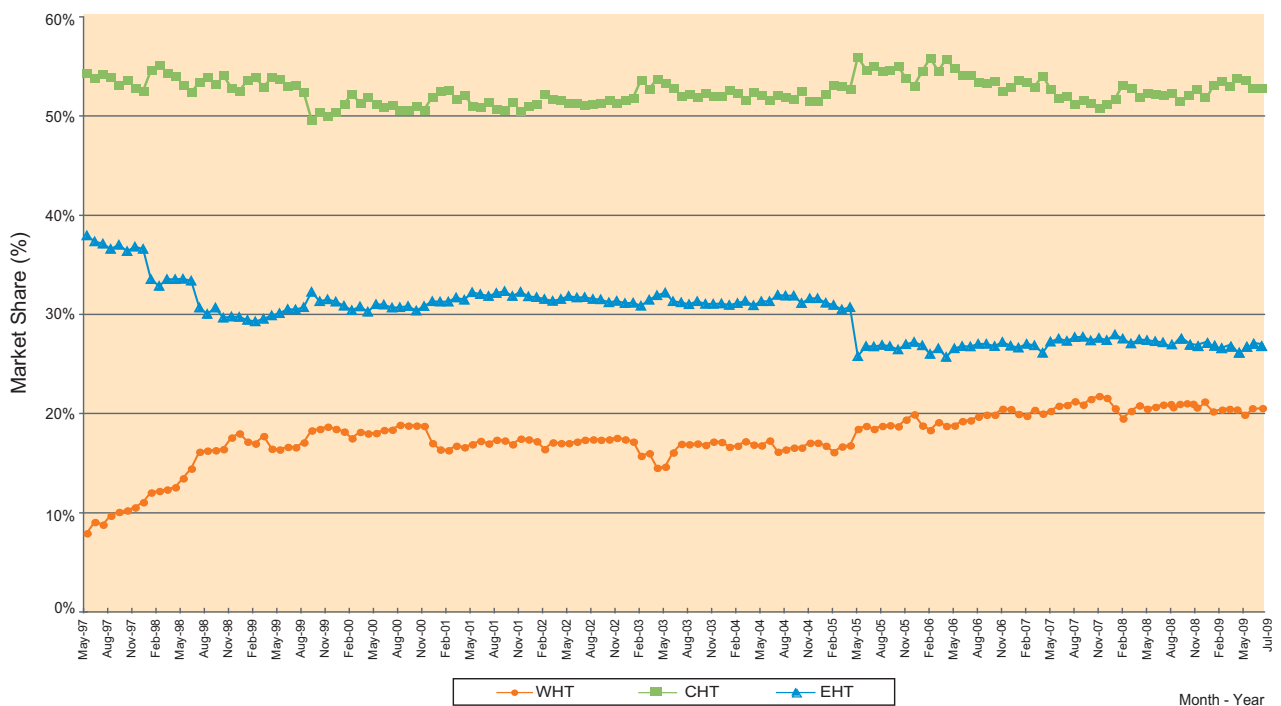
BUS - Double-decked Buses, Single-decked Buses and Light Buses  
 GV - Goods Vehicles  
 PC - Private Cars, Taxis, Motorcycles

## Market Share by Tunnels



WHT - Western Harbour Tunnel  
 EHT - Eastern Harbour Tunnel  
 CHT - Cross Harbour Tunnel

## Monthly Market Share since the Tunnel's Opening on 30 April 1997



# Market Review

## Traffic Statistics

### WHT's Toll and Traffic

	<u>(Since 6/1/2008)</u>	<u>(4/7/2004- 5/1/2008)</u>	<u>(16/2/2003- 3/7/2004)</u>	<u>(3/12/2000- 15/2/2003)</u>	<u>(1/5/1997- 2/12/2000)</u>
<u>Actual Toll Level before Specific Promotion (\$)</u>					
Motorcycles	\$22	\$22	\$20	\$20	\$15
Private Cars	\$45	\$40	\$37	\$35	\$30
Taxis	\$40	\$35	\$35	\$35	\$30
Light Goods Vehicles	\$55	\$55	\$50	\$50	\$45
Medium Goods Vehicles	\$80	\$80	\$70	\$70	\$65
Heavy Goods Vehicles	\$110	\$110	\$100	\$100	\$95
Light Buses	\$55	\$50	\$47	\$45	\$40
Single-decked Buses	\$80	\$70	\$60	\$50	\$40
Double- decked Buses	\$115	\$100	\$85	\$70	\$55
Each Extra Axles (for GV only)	\$30	\$30	\$30	\$30	\$30

<u>Year ended July</u>	<b>2009</b>	<b>2008</b>	<b>2007</b>	<b>2006</b>	<b>2005</b>
------------------------	-------------	-------------	-------------	-------------	-------------

#### Daily Traffic for WHT

Motorcycles	482	462	459	412	385
Private Cars	23,852	24,791	24,175	22,522	21,232
Taxis	10,773	11,483	10,359	8,522	7,044
PC sub-total	35,107	36,736	34,993	31,456	28,661
Light Goods Vehicles	4,152	4,391	4,175	3,886	3,434
Medium Goods Vehicles	905	894	818	740	658
Heavy Goods Vehicles	164	133	129	96	77
GV sub-total	5,221	5,418	5,122	4,722	4,169
Light Buses	2,184	2,332	2,393	2,414	2,414
Single-decked Buses	1,275	1,258	1,282	1,221	1,128
Double- decked Buses	3,156	3,184	3,194	3,182	3,168
BUS sub-total	6,615	6,774	6,869	6,817	6,710
Total	46,943	48,928	46,984	42,995	39,540

#### Traffic Mix for WHT

PC	74.8%	75.1%	74.5%	73.2%	72.5%
GV	11.1%	11.1%	10.9%	11.0%	10.5%
BUS	14.1%	13.8%	14.6%	15.8%	17.0%

PC - Private Cars, Taxis, Motorcycles  
 GV - Goods Vehicles  
 BUS - Double-decked Buses, Single-decked Buses and Light Buses

# Market Review

## Traffic Statistics (Continued)

### Cross Harbour Market's Traffic

<u>Year ended July</u>	<b>2009</b>	<b>2008</b>	<b>2007</b>	<b>2006</b>	<b>2005</b>
<u>Daily Traffic for Total Cross Harbour Market</u>					
Motorcycles	7,959	7,931	8,201	7,976	8,398
Private Cars	101,063	102,405	101,475	99,797	105,019
Taxis	55,060	56,601	54,844	51,110	49,868
PC sub-total	164,082	166,937	164,520	158,883	163,285
Light Goods Vehicles	34,240	36,128	36,292	35,941	36,259
Medium Goods Vehicles	7,149	7,253	7,075	6,912	6,904
Heavy Goods Vehicles	1,300	1,175	1,217	1,099	1,236
GV sub-total	42,689	44,556	44,584	43,952	44,399
Light Buses	6,291	6,549	6,797	6,806	6,786
Single-decked Buses	5,714	5,824	5,936	5,849	5,564
Double-decked Buses	11,228	11,333	11,368	11,465	11,679
BUS sub-total	23,233	23,706	24,101	24,120	24,029
Total	230,004	235,199	233,205	226,955	231,713

### Market Shares for WHT by Vehicle Category

PC	21.4%	22.0%	21.3%	19.8%	17.6%
GV	12.2%	12.2%	11.5%	10.7%	9.4%
BUS	28.5%	28.6%	28.5%	28.3%	27.9%
Total	20.4%	20.8%	20.1%	18.9%	17.1%

PC - Private Cars, Taxis, Motorcycles  
 GV - Goods Vehicles  
 BUS - Double-decked Buses, Single-decked Buses and Light Buses